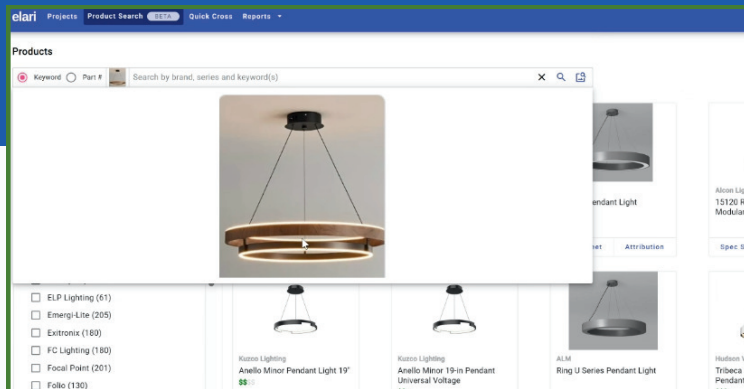


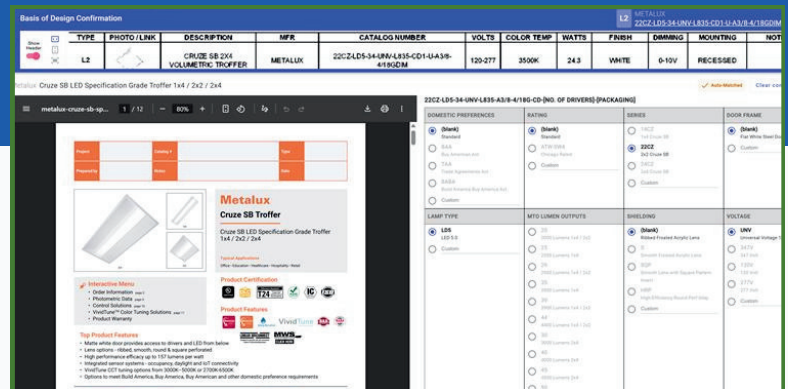
ELARI SOLUTIONS

The Industry-Leading AI-Powered Product Management Platform

Elari Solutions helps NEMRA Lighting Members specify smarter, cross faster, manage more efficiently, and strengthen your role as a trusted expert in the lighting industry.



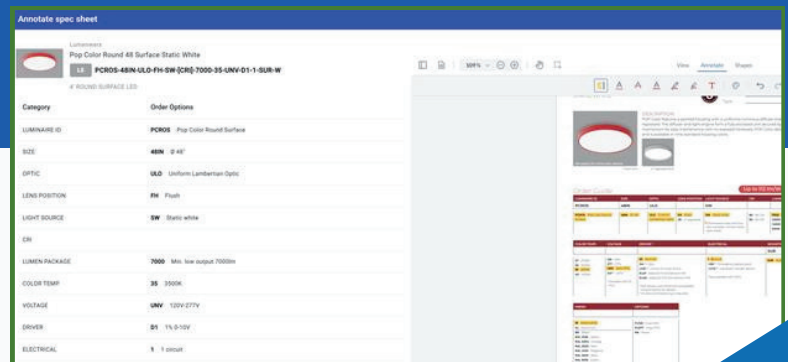
Line Card Search & Image Match



Product Configurators for All Lines

Basis of Design				Alternate Design			
Type	Manufacturer	Part #	Schedule	Manufacturer	Part #		
L1	Metalux	1	#4ENLED-LD-46SL-UNV-EL149-LB35-CD1-U	Day-Brite CFI	F55-4-40L-835-UNV-DM	✓	
L1E	Metalux	1	#4ENLED-LD-46SL-UNV-EL149-LB35-CD1-U	Day-Brite CFI	F55-4-40L-835-UNV-DM EM10	✓	
L2	Metalux	1	#1480-25-UNV-LB35-CD1-U	Day-Brite CFI	1-FCX-G-30L-835-4-RS-UNV-DM	✓	
L2E	Metalux	1	#1480-25-UNV-EL149-LB35-CD1-U	Day-Brite CFI	1-FCX-G-30L-835-4-RS-UNV-DM 80L10LST	✓	
L3	Lithonia Lighting	1	#LDN60-ALD-SBW1-L8AR-LSS-MVOLT-U2	Lightstar	65-N / CXL-20-835-N-210-U-F / C6-S-OL-NM	✓	
L3E	Lithonia Lighting	1	#LDN60-ALD-SBW1-L8AR-LSS-MVOLT-U2 E10WCP	Lightstar	65-N / CXL-20-835-N-210-U-F / C6-S-OL-NM	✓	
L4E	Ugman Lighting USA	1	#LUE-8052-20W-M-835-120-27V	Day-Brite CFI	2FXC-G-36L-835-2-DS-UNV-DM	✓	
L5	Metalux	1	#220R-LD-40-F1-UNV-LB35-CD1-U	Day-Brite CFI	2FXC-G-36L-835-2-DS-UNV-DM EM10	✓	
L5E	Metalux	1	#220R-LD-40-F1-UNV-EL149-LB35-CD1-U	Day-Brite CFI	F55-2-20L-835-UNV-DM	✓	
L6	Metalux	1	#23ENLED-LD-26SL-LN-UNV-LB35-CD1-U	Day-Brite CFI	F55-2-20L-835-UNV-DM	✓	
L7	Portfolio	1	#LDSSQAC10930010C3021MM	Lightstar	6-S-N / P40-OL-10-830-M-CL-210-U	✓	
L7E	Portfolio	1	#LDSSQAC10930010C3021MM / EMB006ST	Lightstar	6-S-N / P40-OL-10-830-M-CL-210-U / LCEM	✓	
X1	Sera-Lite	1	#EUS70R	Lightlams	5-GEN-DM	✓	

AI-Enhanced Schedule Crossing



Automated Submittals

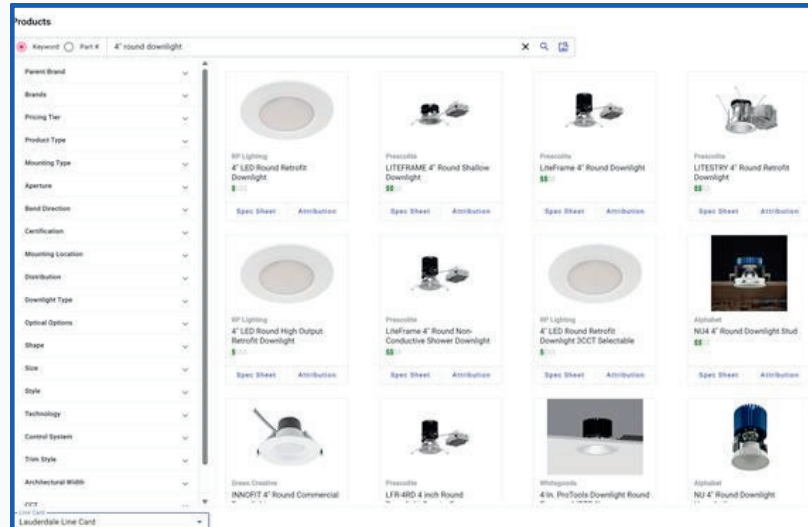


Strengthen Your Position in the Value Chain

Elari Solutions helps lighting agents conduct business through an intelligent platform that unites everyone on a single network. By standardizing product data and eliminating fragmented workflows, teams can execute faster and win more business.

Key Capabilities

- **Effortless Schedule Extraction:** Leverages proprietary AI and OCR technology to efficiently process and organize unstructured product schedules.
- **Part Number Matching:** Automatically associates over 80% of schedule part numbers to manufacturer spec sheets for seamless specification.
- **Line Card Management:** Standardizes and manages product data across all lines, enabling rapid product search, specification, and confident decision-making.
- **Integrated Configurators:** Quickly create complete part numbers using order-option configurators for all products on your line card.
- **Schedule Crossing:** Simplifies finding alternates, creating side-by-side comparisons, and exporting quote-ready details.
- **Automated Submittals:** Speeds up submittal creation with access to the latest manufacturer spec sheets and line product configurators.
- **Seamless Data Integration:** Exports data in formats that fit existing workflows, including Excel, Agile XML, and API integration for custom website experiences.
- **Actionable Intelligence:** Delivers insights from product search, specification, and crossing activity to create a competitive advantage.
- **Agent-Centric Solutions:** Strengthen agents' roles with tools that enhance their expertise.



“Elari Solutions streamlines workflows and empowers NEMRA Lighting Agents to execute faster, strengthen relationships, and win more business with AI-driven insights.”

By partnering with NEMRA Lighting, you gain access to not just Elari Solutions but a comprehensive network of service providers designed to elevate your business. Together, we empower rep firms to thrive in a competitive market.



Get Started with Elari Solutions

